

Carlson

Powerful Features to Help You Do More in Less Time

Take Your Choice

Get the world's most flexible & powerful data collection software:

- SurvCE for handheld data collectors
- SurvPC for rugged PCs

Carlson SurvCE's powerful features help you do more, do it accurately & in less time:

- **Powerful Roading:** favored by U.S. DOTs and heavy highway contractors in Spain, Australia and around the world
- **Advanced functionality** for staking intersections and culde-sacs using Carlson Road Network Files
- **Highly graphical and intuitive** user interface – the software prompts you so no detail is missed
- **Strong GIS features** for accurate data capture, including attribute data, that allows seamless links to Esri
- **True versatility:** SurvCE runs on 99% of all GPS and total station equipment models in service today
- **Optimal Field-to-Finish:** no need to spend extra hours in the office to make drawings
- **Easy data exchange** due to rich support of CAD file formats and .dwg, .dgn, .shp
- **More field capabilities** with quick and easy volume calculation and ability to generate points from polylines
- **Cut/Fill stakeout** using surface files

Carlson offers the Surveyor, Surveyor+ or CarlsonMINI — fast, durable, powerful and completely ruggedized data collectors, which come loaded with SurvCE.



Find Out More NOW!

For more info or to locate a dealer near you:

call - +31 (0) 36 750 1781

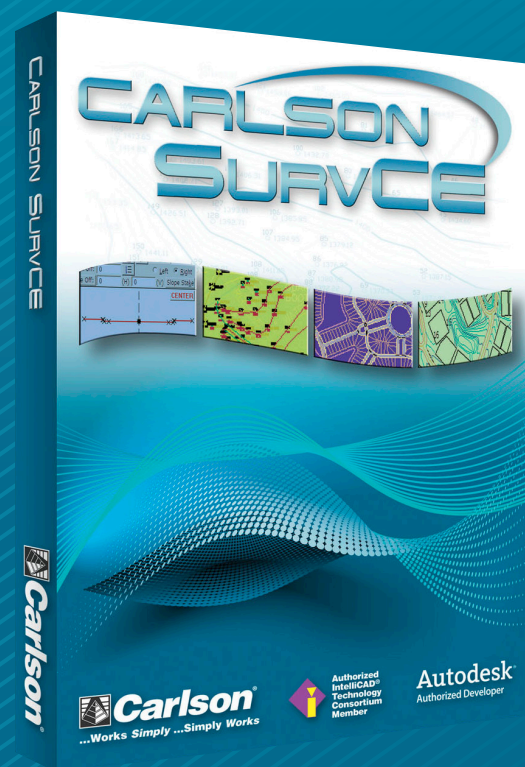
www.carlsonsw.com

www.carlsonEMEA.com

SurvCE

"I know of no other field and office software combination that works together as seamlessly as Carlson SurvCE.... The ability to transfer coordinate files and alignment files back and forth with no conversion is a big time saver."

Kevin P. O'Connor, L.S., Urban Engineering & Associates, Inc.



Carlson

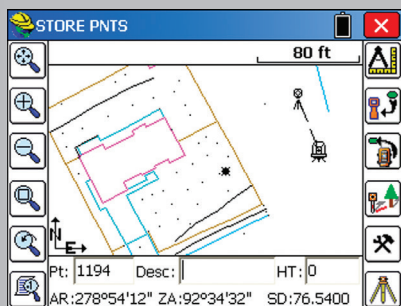
Europe ■ Middle East ■ Africa
SINCE 1983

Oberdorfstrasse 8
8153 Rümlang
Switzerland
+41 44 817 01 21

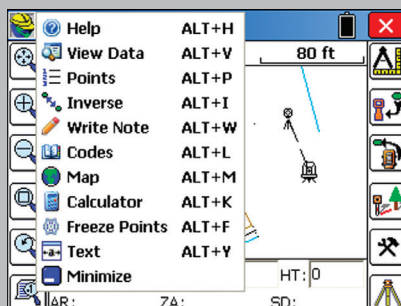
Markerkant 1338
1314 AN Almere
The Netherlands
+31 36 750 1781

Top New Features of Carlson SurvCE now allow users to:

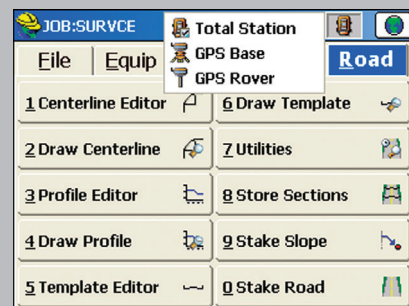
1. **Compute/store multiple points** based on stations/offsets definition at once
2. Use an **optional profile** to compute the elevations
3. **"Shift" current GNSS corrections** coming from a Reference Base or NTRIP network, to match an existing User Coordinate System with no need to produce a new localization.
4. **Compute/store points** at any horizontal alignment characteristic elements using also skew, intersect, PI, bisector, and more methods
5. **Export ASCII** point data in a flexible manner, controlling the fields exported and the data, geometry or non-geometry point data (GIS data) to export
6. **Load TXT or CSV** user-defined localization specific point data in Load Points: LAT/LON optional elevation and point coordinates
7. **Inspect and stake locations** on a surface in a control manner, using Point, OSNAP, Station/Offset if a horizontal alignment is used
8. **View the surface** and the current instrument reading in a section view style
9. **Use a unique Feature Definition file** for all your GIS features
10. **Use predefined Notes** for Feature Codes



Collect points in the graphics mode.



Hot List lets users jump to routines.



Instrument Switching – SurvCE keeps track of every instrument, so switching equipment is fast and easy.

Easy to use

- **Tab-Based MENU Structure.** All commands are visible in each menu, preventing the need for Up-Down Arrow Keying to view options. Enhanced graphics
- **Collect points in the graphics mode.** Points plot as they are shot in the field or entered. There is no need to switch between screens to view your points.

Read in LandXML

- **Supports** LandXML points, DTM, graphics, alignments, profiles and sections. Features

Modern Look

- **SurvCE is colorful** with icons standardized to create continuity throughout the product and modernize the user experience.

Hot List

- **The new Hot List** lets users jump to the SurvCE routines that previously had shortcuts without having to memorize key strokes. It also provides shortcut functionality to devices without keyboards.

Volumes

- **SurvCE can compute volumes** between two surfaces, one surface and an elevation or simple stockpile volumes. Surfaces can be defined by graphical entities and points or by Carlson TIN files.

Help

- **The software has optional on-board help files.** These files are the entire user manual and can be installed separately. Click on the SurvCE icon and select Help to get the help document that pertains to the current routine.

Leveling

- **SurvCE** can be used to collect trigonometric level loops and digital level loops. Loops can be processed and adjusted on the device and all existing project coordinate points can be updated.

GPS Networks

- **SurvCE supports** several GPS network protocols, such as NTRIP, TCP and UDP.

Localization

- **The software supports** an unlimited number of localization points. All project scale settings and coordinate system options have been centrally located in the localization dialog.

Angle Sets in Store Points

- **SurvCE allows** users to "Configure" how each reading is measured with regard to direct and reverse options (Formerly Known as SS/ Trav). If direct and reverse readings are taken at the backsight, then any direct and reverse foresight will be considered an angle set and will be reduced accordingly. This eliminates the need to use a separate routine for angle sets.

Job Settings

- **SurvCE** has the option to use a template DXF file for new jobs so that all layers and colors are automatically created per your company standard.
- It has the **option to auto-load** cutsheets and control files from the previous job for those users that work on one site continuously
- **SurvCE** has the ability to turn off the auto-descriptions in stakeout and completely customize how all stakeout routines behave
- **Point Number by Interval** – SurvCE can interval the point ID by using the "Add to Next Pt ID" option. To number all points on the odd numbers, start at 1 and use 2 in this field.

Feature Coding

- **SurvCE can collect parallel lines** using the offset horizontal and offset vertical line drawing commands and close a rectangle by three points using the rectangle command. In the settings section of Special Codes, the user can even auto compute and store the additional points at the line vertices that were created by the software.

- **SurvCE** allows the user to code in numerous coding styles that may be defined by their office package.

Instrument Switching

- **SurvCE keeps track** of every instrument completely separate. This includes all base stations, rovers and total stations, so that mixing equipment is easy. Simply configure your gear once and forget it. The instrument icon has been enhanced to allow you to switch between your current equipment.

Station Equations

- **SurvCE supports** station equations.

Reference Alignments

- **SurvCE supports** associating a reference alignment for station reporting. This allows the user stake a 3' offset to a curb line that is not parallel to the CL of the road, stop at all critical curb stake locations and have the station be reported based on the CL alignment.

Skew Angle Staking

- **SurvCE supports** staking offsets on a skew angle and provides the option to stake offset intersections and bisectors at angle points and the radius or PI point of an arc without leaving the Stake Line/Arc routine.

SurvCE Has More:

- Supported Instruments Supported File Formats Supported Handheld Devices

Languages

- In addition to English, SurvCE is available in 15 additional languages, rated following:
- Language translations prepared and endorsed by Carlson Software: Spanish, Portuguese
- Additional substantially complete language translations, actively updated: French, Hungarian, Simplified Chinese, Korean, Swedish, Turkish
- Additional partial or non-updated language translations available: Czech, Dutch, Finnish, German, Greek, Italian, Polish