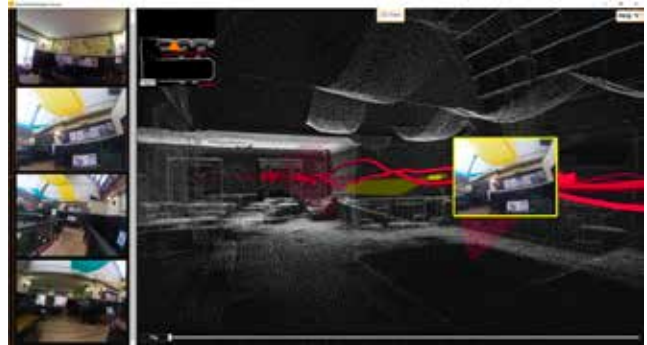


GeoSLAM ZEB-CAM

Adding vision and context
to your 3D scan data



GeoSLAM.tech



GeoSLAM ZEB-CAM

A bolt on video camera that adds contextual imagery to your scan data

What it does:

ZEB-CAM is the latest add-on option for the ZEB-REVO that adds vision and context to your 3D data. Available for both new and existing ZEB-REVO customers, it integrates seamlessly with the ZEB-REVO scanner and allows visual images to be viewed alongside the 3D data in the viewer

Using GeoSLAM Desktop, contextual visual images can be viewed alongside 2D or 3D point clouds.

Click on a point of interest on the 2D or 3D point cloud and corresponding contextual images of that location are displayed.

Features:

Compatibility

Integrates seamlessly with existing ZEB-REVO hardware.

Context

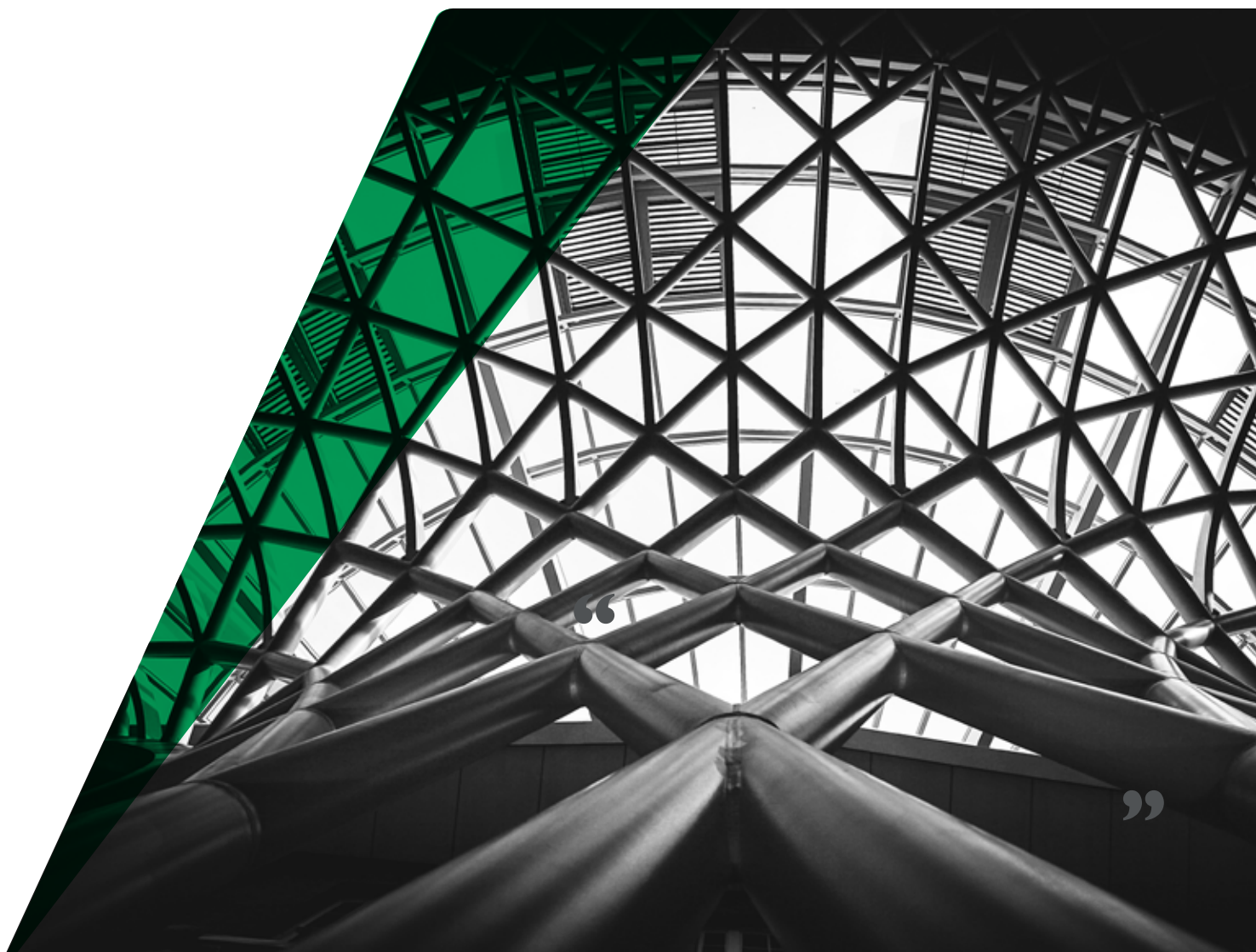
ZEB-CAM adds contextual imagery to your scan data, making feature extraction simpler than ever.

Imagery

Optical flow technology allows accurate synchronisation of acquired imagery and point cloud data.

Technical Specifications

Camera Type	GoPro Session	Logging Medium	Internal SD card
Mode	Video	Power Supply	Internal Battery
Video Resolution	1440p	Battery Life	2 hours continuous use
Frames per Second	30	Image Syncing	Optical flow using integrated inertial sensor
Image Resolution	1920 x 1440	Connection	1.5m cable with multi pin LEMO connector
Field of View	Ultrawide (~120°x 90°)	Software	Requires GeoSLAM Desktop V3 or later



Get in Touch

GeoSLAM

Unit 1 Moorbridge Court
Moorbridge Road East
Bingham
Nottinghamshire
NG13 8GG

+44 (0) 1949 831 814
info@geoslam.com
@GeoSLAMLtd



GeoSLAM.tech