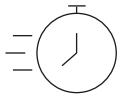


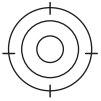


**FJD Trion™**

# S1 3D LiDAR Scanner



**320,000**  
Points Per  
Second



**0.8-2 cm**  
Accuracy



**16**  
Sensors



**120 m**  
Range



## Portability

Handheld, backpack, and shoulder carrier, lightweight of 1.8kg.

## Versatility

Indoor, outdoor and underground without GNSS receivers.

## Leading SLAM

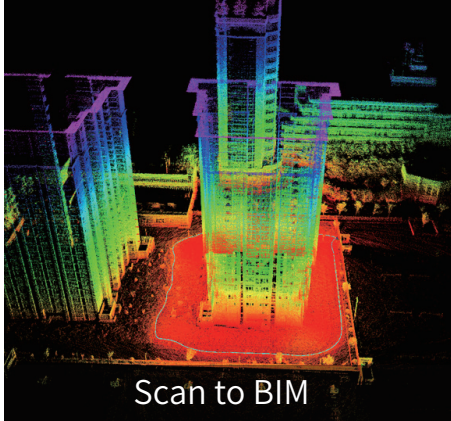
Real-time processing and display automatically.

## Dual Batteries

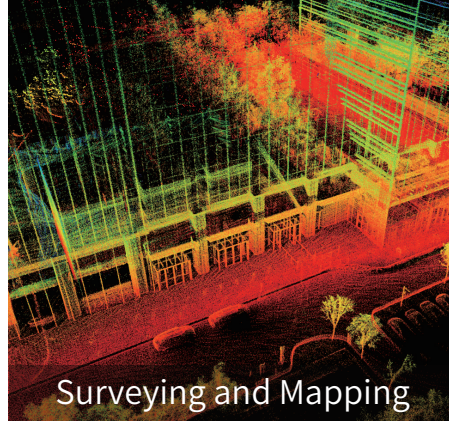
Hot-swappable dual batteries for Redundant Power Supply.

# A new way to scan the world

FJD Trion S1, lightweight and portable, offers you a new way to scan the world around you. Indoor, outdoor and underground, FJD Trion S1 can fast catch high-quality and professional results. Powered by Leading SLAM algorithm, it processes and displays accurate point clouds on the mobile terminal in real-time.



Scan to BIM



Surveying and Mapping



Heritage Conservation



Pile Measurement



Volume Measurement



Forestry Surveying

Range	120 m
Laser Class	Class 1/ $\lambda$ 905nm
FOV	360°×270°
Accuracy	0.8-2 cm
Vertical Angular Resolution	2°
Horizontal Angular Resolution	0.36°
Points per Second	320,000
Processing	Real-time
Display	Real-time preview on mobile terminal
Carrier	Handheld, Backpack or shoulder strap
Scanner Weight	1.8 kg
Datalogger Weight (incl. single battery)	2.2 kg
No. of Sensors	16
Battery Life (Dual batteries)	4h
Ingress Protection	IP54
Storage Capacity	512GB